

# Summary

**CITY OF BUENA PARK**  
**List of Principal Officials**

---

CITY COUNCIL

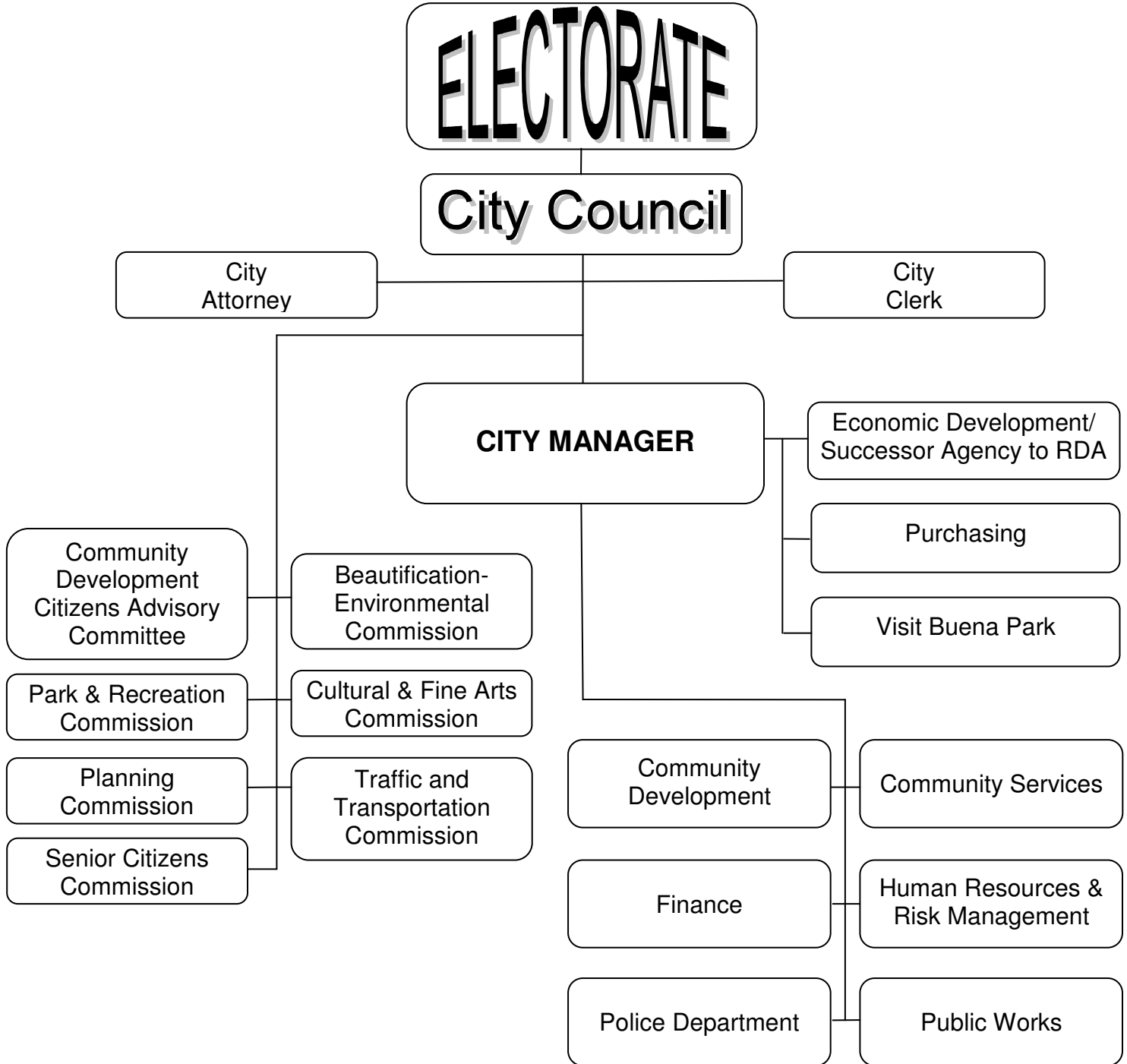
Mayor ..... Elizabeth Swift, Ed.D.  
Mayor Pro-Tem ..... Virginia Vaughn  
Council Member ..... Steve Berry  
Council Member ..... Arthur C. Brown  
Council Member ..... Fred R. Smith

ADMINISTRATION AND DEPARTMENT HEADS

City Manager ..... James B. Vanderpool  
City Attorney ..... Patrick K. Bobko  
City Clerk ..... Adria M. Jimenez  
Director of Community Development ..... Joel Rosen  
Director of Community Services ..... Margaret Riley  
Director of Finance ..... Sung Hyun  
Director of Human Resources and Risk Management ..... Eddie Fenton  
Police Chief ..... Corey Sianez  
Director of Public Works/City Engineer ..... David Jacobs

**CITY OF BUENA PARK**  
Organizational Chart

---



**CITY OF BUENA PARK**  
**Schedule of Annual Appropriation Limitation**  
**for Fiscal Years 2016-17 and 2017-18**

	<u>2016-17</u>	<u>2017-18</u>
<b>Cumulative Growth Rate</b>	1.0641%	1.1284%
<b>Appropriations Limit</b>	\$238,796,891	\$269,458,412
<b>Projected Revenues from Proceeds of Taxes</b>	\$56,554,930	\$54,898,260
<b>Amount of Projected Revenues Below the Maximum Revenue Allowed</b>	\$182,241,961	\$214,560,152
<b>Percentage Under Appropriation Limitation</b>	76.32%	79.63%

**Article XIII B of the California Constitution, more commonly known as the Annual Appropriation Limitation or "Gann Limit", specifies the amount of allowable revenue that the City of Buena Park can appropriate from the proceeds of taxes. The City's Appropriation Limitation is projected to be approximately \$214.6 million or 79.63% below its Gann Limit for the 2017-18 fiscal year. In accordance with Proposition 111, the Appropriation Limitation is calculated utilizing a format based on the percentage change in the City's population and the percentage of growth in the City's non-residential assessed valuation.**

**CITY OF BUENA PARK**  
**Summary of Resources and Requirements**  
**Fiscal Year 2017-18**

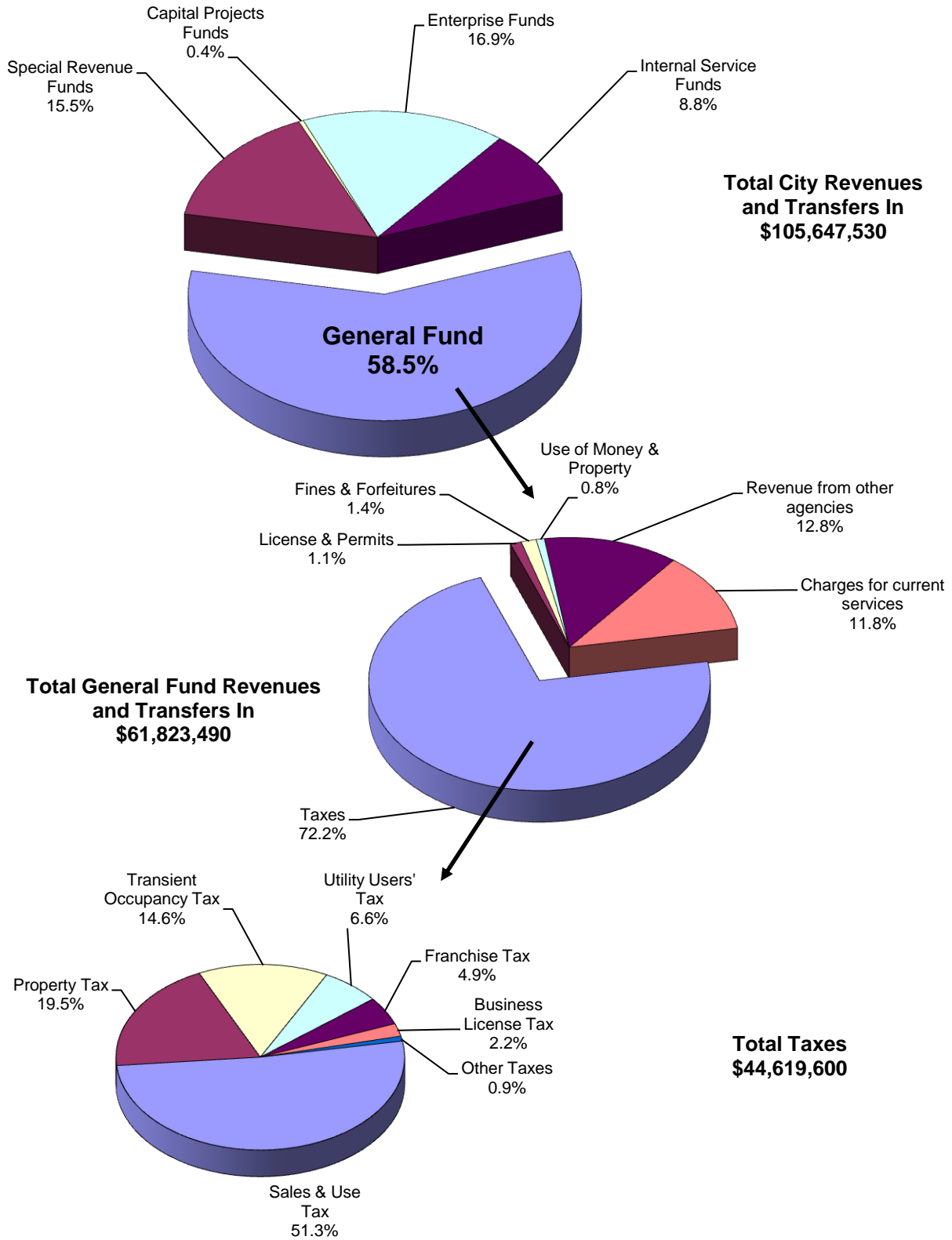
FUND TYPE/DESCRIPTION	Beginning Balance July 2017	Resources		
		Estimated Revenue	Transfers In	Total Resources
<b><u>General and Special Revenue Funds:</u></b>				
General Fund	\$ 14,000,000	\$ 61,673,820	\$ 149,670	\$ 75,823,490
Economic Development Fund	2,200,000	1,035,000	-	3,235,000
Local Law Enforcement Block Grant Fund	-	-	54,540	54,540
Asset Forfeiture Fund	76,000	152,000	-	228,000
Capital Projects Fund	-	1,000	-	1,000
Proposition 172 PD Augmentation Fund	-	401,700	-	401,700
Supplemental Law Enforcement Fund	-	120,500	166,880	287,380
Gas Tax Fund	1,500,000	1,710,630	-	3,210,630
Measure M2 Fund	1,100,000	1,784,930	-	2,884,930
HOME Deferred Loan Fund	-	2,000	-	2,000
Community Development Block Grant Fund	-	727,610	-	727,610
State OCATT Fund	-	264,980	-	264,980
Park In-Lieu Fund	-	430,000	-	430,000
Traffic Congestion Relief Fund	61,000	5,500	-	66,500
AB2766/AQMD Fund	366,000	101,500	-	467,500
Successor Agency to RDA	-	9,705,820	-	9,705,820
Low/Mod Housing Successor Fund	2,500,000	100,000	-	2,600,000
<b>General and Special Revenue Fund Total:</b>	<b>21,803,000</b>	<b>78,216,990</b>	<b>371,090</b>	<b>100,391,080</b>
<b><u>Enterprise Fund:</u></b>				
Water Enterprise Fund	4,300,000	17,807,500	-	22,107,500
<b><u>Internal Service Funds:</u></b>				
Workers' Compensation Fund	500,000	1,022,000	-	1,522,000
Liability Insurance Fund	100,000	3,000	1,145,000	1,248,000
Accrued Leave Fund	1,000,000	255,000	-	1,255,000
Equipment Maintenance & Replacement Fund	4,000,000	2,151,590	-	6,151,590
Payroll Revolving Fund	-	2,055,050	-	2,055,050
Management Information Systems Fund	1,400,000	416,710	-	1,816,710
Facilities Maintenance Fund	330,000	2,203,600	-	2,533,600
<b>Internal Service Funds Total:</b>	<b>7,330,000</b>	<b>8,106,950</b>	<b>1,145,000</b>	<b>16,581,950</b>
<b>Grand Totals</b>	<b>\$ 33,433,000</b>	<b>\$ 104,131,440</b>	<b>\$ 1,516,090</b>	<b>\$ 139,080,530</b>

Requirements						Surplus (Deficit)	Ending Balance June 2018
Salaries & Benefits	Maintenance & Operations	Capital Equipment	Capital Projects	Transfers Out	Total Requirements		
\$ 37,045,520	\$ 25,707,880	\$ 217,760	\$ 200,000	\$ 1,056,880	\$ 64,228,040	\$ (2,404,550)	\$ 11,595,450
-	269,070	-	-	70,000	339,070	695,930	2,895,930
52,450	2,090	-	-	-	54,540	-	-
25,000	49,000	-	-	-	74,000	78,000	154,000
-	-	-	-	-	-	1,000	1,000
296,390	50,570	-	-	54,540	401,500	200	200
287,380	-	-	-	-	287,380	-	-
395,440	216,650	19,200	1,085,000	22,500	1,738,790	(28,160)	1,471,840
415,540	64,440	-	1,735,000	-	2,214,980	(430,050)	669,950
-	-	-	-	-	-	2,000	2,000
538,460	189,150	-	-	-	727,610	-	-
264,980	-	-	-	-	264,980	-	-
-	-	-	-	-	-	430,000	430,000
-	-	-	-	-	-	5,500	66,500
-	-	-	-	-	-	101,500	467,500
154,960	9,527,730	-	-	-	9,682,690	23,130	23,130
294,600	116,500	-	-	-	411,100	(311,100)	2,188,900
39,770,720	36,193,080	236,960	3,020,000	1,203,920	80,424,680	(1,836,600)	19,966,400
3,090,650	12,445,670	70,120	2,925,000	170,970	18,702,410	(894,910)	3,405,090
-	1,180,120	-	-	126,200	1,306,320	(284,320)	215,680
-	1,211,720	-	-	-	1,211,720	(63,720)	36,280
250,000	-	-	-	-	250,000	5,000	1,005,000
475,190	1,067,690	625,300	-	-	2,168,180	(16,590)	3,983,410
-	2,055,050	-	-	-	2,055,050	-	-
134,670	274,110	57,150	-	-	465,930	(49,220)	1,350,780
423,590	1,795,930	5,000	-	15,000	2,239,520	(35,920)	294,080
1,283,450	7,584,620	687,450	-	141,200	9,696,720	(444,770)	6,885,230
\$ 44,144,820	\$ 56,223,370	\$ 994,530	\$ 5,945,000	\$ 1,516,090	\$ 108,823,810	\$ (3,176,280)	\$ 30,256,720

# CITY OF BUENA PARK

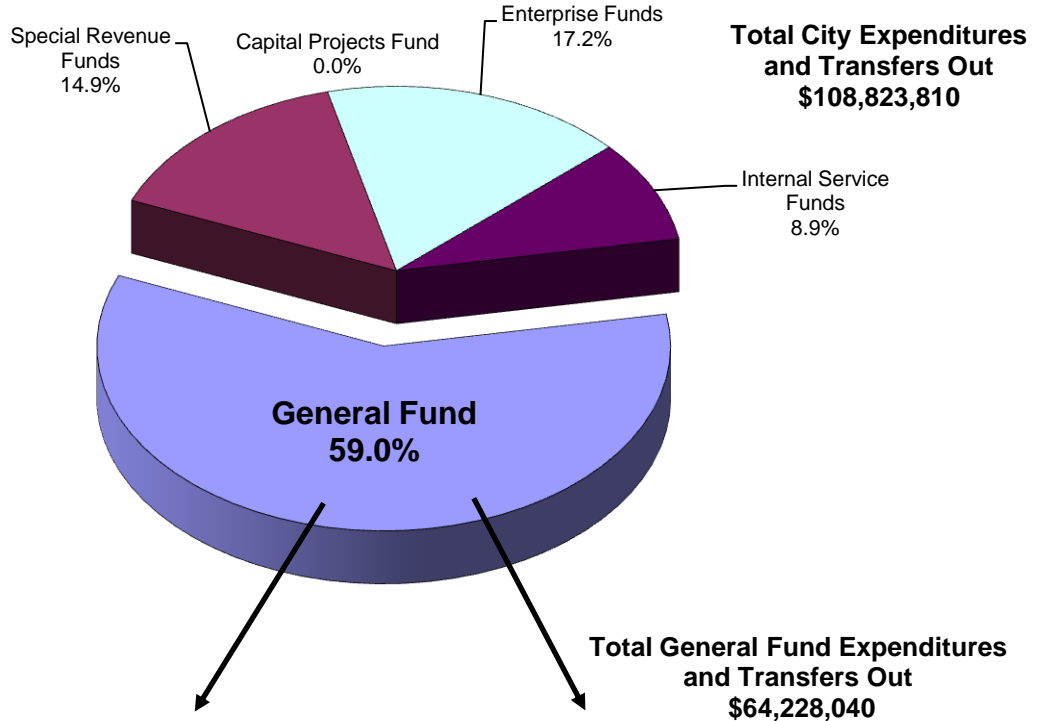
Revised Budget  
Fiscal Year 2017-18

## Revenues - Where it comes from



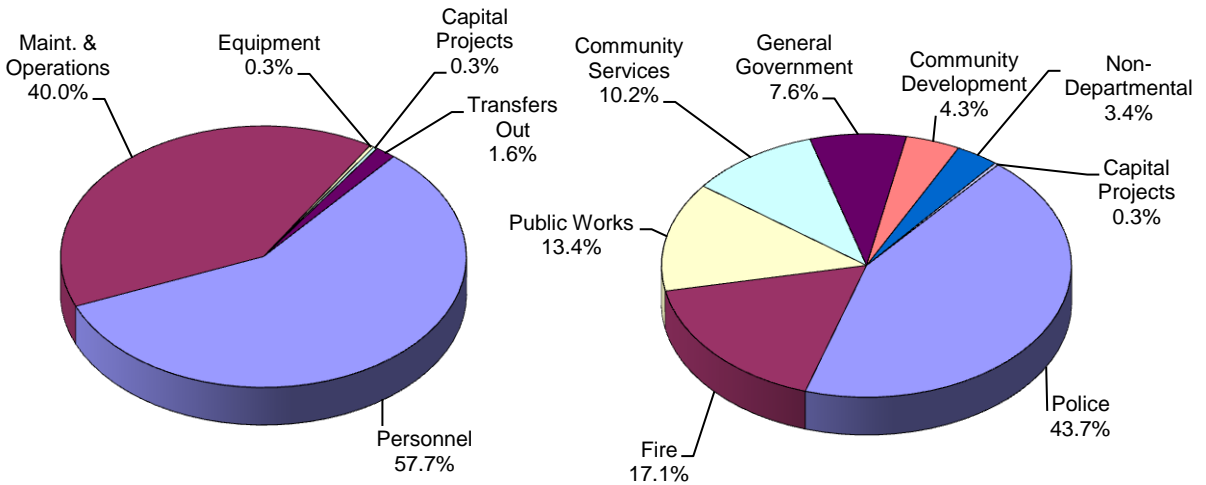
**CITY OF BUENA PARK  
Revised Budget  
Fiscal Year 2017-18**

**Expenditures - Where it goes**



**By Type**

**By Function**





**CITY OF BUENA PARK**  
**Expenditure Recap by Fund and Activity**  
**Fiscal Year 2017-18**

	11	12	18	20	22	23	24	25	29	30	52	62	63
	<i>General</i>	<i>Economic</i>	<i>LLEBG</i>	<i>Asset</i>	<i>Prop 172</i>	<i>SLESF</i>	<i>Gas</i>	<i>Measure</i>	<i>CDBG</i>	<i>State</i>	<i>Water</i>	<i>Workers' Comp</i>	<i>Liability</i>
<i>Department</i>	<i>Fund</i>	<i>Fund</i>	<i>Fund</i>	<i>Forfeiture</i>	<i>Fund</i>	<i>Fund</i>	<i>Tax</i>	<i>M2</i>	<i>Fund</i>	<i>OCATT</i>	<i>Fund</i>	<i>Self-Ins</i>	<i>Self-Ins</i>
City Council	316,560												
City Manager's Office	1,219,490	339,070							727,610				
Community Support Svcs	705,050												
City Attorney	341,170												
Human Resources/Risk Mgmt.	864,800												
City Clerk's Office	454,580												
Finance	970,190												
Community Development	2,751,830												
Fire Services	10,953,450												
Police Department	28,075,860												
Police Dept - Other Funds			54,540	74,000	401,500	287,380				264,980			
Water Enterprise											15,777,410		
Public Works	8,626,270						631,290	479,980					
Community Services	6,576,290												
Non-departmental	2,172,500						22,500						
Self-Ins Workers' Comp												1,306,320	
Self-Ins Liability													1,211,720
Internal Svc - Accrued Leave													
Equipment Maintenance													
Management Info Systems													
Facilities Maintenance													
<b>Total Operating Budget</b>	<b>64,028,040</b>	<b>339,070</b>	<b>54,540</b>	<b>74,000</b>	<b>401,500</b>	<b>287,380</b>	<b>653,790</b>	<b>479,980</b>	<b>727,610</b>	<b>264,980</b>	<b>15,777,410</b>	<b>1,306,320</b>	<b>1,211,720</b>
Capital Improvement Projects	200,000	-	-	-	-	-	1,085,000	1,735,000	-	-	2,925,000	-	-
<b>TOTAL BUDGET</b>	<b>64,228,040</b>	<b>339,070</b>	<b>54,540</b>	<b>74,000</b>	<b>401,500</b>	<b>287,380</b>	<b>1,738,790</b>	<b>2,214,980</b>	<b>727,610</b>	<b>264,980</b>	<b>18,702,410</b>	<b>1,306,320</b>	<b>1,211,720</b>

65	71	73	74	77	97	98					
<i>Acc Leave Payout Fund</i>	<i>Equipment Maintenance Fund</i>	<i>Payroll Revolving Fund</i>	<i>Mngt Info Systems Fund</i>	<i>Facilities Maintenance Fund</i>	<i>Successor Agency Fund</i>	<i>Housing Successor Fund</i>	<b>TOTAL</b>	<i>Personnel</i>	<i>Maintenance &amp; Operations</i>	<i>Equipment</i>	<i>Capital Improvement Projects</i>
					9,682,690	411,100	316,560	157,490	159,070	-	
							12,379,960	1,995,680	10,384,280	-	
							705,050	398,440	306,610	-	
							341,170	-	341,170	-	
							864,800	601,500	263,300	-	
							454,580	404,520	50,060	-	
							970,190	878,260	91,930	-	
							2,751,830	2,030,280	720,450	1,100	
							10,953,450	33,000	10,920,450	-	
							28,075,860	24,848,250	3,046,340	181,270	
							1,082,400	926,200	156,200	-	
							15,777,410	3,090,650	12,616,640	70,120	
							9,737,540	3,295,960	6,416,480	25,100	
							6,576,290	3,199,140	3,347,660	29,490	
		2,055,050					4,250,050	1,002,000	3,248,050	-	
							1,306,320	-	1,306,320	-	
							1,211,720	-	1,211,720	-	
250,000							250,000	250,000	-	-	
	2,168,180						2,168,180	475,190	1,067,690	625,300	
			465,930				465,930	134,670	274,110	57,150	
				2,239,520			2,239,520	423,590	1,810,930	5,000	
250,000	2,168,180	2,055,050	465,930	2,239,520	9,682,690	411,100	102,878,810	44,144,820	57,739,460	994,530	
-	-	-	-	-	-	-	5,945,000	-	-	-	5,945,000
250,000	2,168,180	2,055,050	465,930	2,239,520	9,682,690	411,100	108,823,810	44,144,820	57,739,460	994,530	5,945,000

**CITY OF BUENA PARK**  
**Comparison of General Fund Budget**  
**For Fiscal Year 2017-18 Adopted and Revised**

	Adopted Budget 2017-18	Revised Budget 2017-18	Percent Increase/ (Decrease)
Beginning excess Fund Balance	\$ 730,730	\$ 730,730	-
Estimated Operating Revenues	60,745,460	61,673,820	1.53%
Estimated Operating Expenditures	(62,645,990)	(62,971,160)	0.52%
Less:			
Transfers Out	(1,042,140)	(1,056,880)	1.41%
Capital Improvement Projects	<u>(200,000)</u>	<u>(200,000)</u>	-
Add:			
Transfers In	<u>149,670</u>	<u>149,670</u>	0.00%
Estimated Fund Surplus (Deficit)	<u>(2,262,270)</u>	<u>(1,673,820)</u>	(26.01%)
Current vacant positions	235,000	235,000	
Projected vacant positions	750,000	750,000	
Revised deficit	<u><u>\$ (1,277,270)</u></u>	<u><u>\$ (688,820)</u></u>	

**Expenditure Recap**

Operating Expenditures	\$ 62,645,990	\$ 62,971,160	0.52%
Transfers Out	1,042,140	1,056,880	1.41%
Capital Improvement Projects	<u>200,000</u>	<u>200,000</u>	-
Total General Fund Expenditures	<u><u>\$ 63,888,130</u></u>	<u><u>\$ 64,228,040</u></u>	0.53%

CITY OF BUENA PARK  
**Schedule of Transfers**  
**Fiscal Year 2017-18**

**Transfers Out**

<b>Transfers In</b>	General Fund	Economic Development	Prop 172	Gas Tax	Water	Workers' Comp.	Facility Maint.	Total
General Fund		\$ 70,000		\$ 7,500	\$ 72,170			\$ 149,670
LLEBG			\$ 54,540					54,540
SLESF	\$ 166,880							166,880
Public Liab Ins	890,000			15,000	98,800	\$ 126,200	\$ 15,000	1,145,000
<b>Total</b>	<b>\$ 1,056,880</b>	<b>\$ 70,000</b>	<b>\$ 54,540</b>	<b>\$ 22,500</b>	<b>\$ 170,970</b>	<b>\$ 126,200</b>	<b>\$ 15,000</b>	<b>\$ 1,516,090</b>



**CITY OF BUENA PARK  
SUMMARY OF POSITIONS  
FISCAL YEARS 2014-15 TO 2017-18**

	APPROVED FY14-15	APPROVED FY15-16	APPROVED FY16-17	APPROVED FY17-18	REVISED FY17-18
<u>CITY COUNCIL</u>					
COUNCILMEMBER	5	5	5	5	5
<u>CITY MANAGER</u>					
CITY MANAGER	1	1	1	1	1
DEPUTY CITY MANAGER	-	-	-	-	1
ECONOMIC DEVELOPMENT ADMINISTRATOR	1	1	1	1	1
PURCHASING MANAGER	1	1	1	1	1
ECONOMIC DEVELOPMENT MANAGER	1	1	-	-	-
VISIT BUENA PARK DIRECTOR	1	1	1	1	1
MARKETING SPECIALIST	-	-	-	-	1
SALES & MARKETING ASSISTANT	1	1	1	1	-
VISITOR SERVICES AND SALES MANAGER	1	-	-	-	-
ASSISTANT TO CITY MANAGER	1	1	1	1	-
COMMUNICATIONS & MARKETING MANAGER	1	1	1	1	1
SENIOR MANAGEMENT ANALYST	-	-	1	1	1
HOUSING AND CDBG ANALYST	1	1	1	1	1
MANAGEMENT ANALYST	1	1	1	1	1
MANAGEMENT ASSISTANT	1	1	-	-	-
EXECUTIVE ASSISTANT	1	1	1	1	1
MARKETING ASSISTANT	-	-	0.5	0.5	0.5
SENIOR ADMINISTRATIVE ASSISTANT	1	1	1	1	1
BUYER	1	1	1	1	1
STOREKEEPER	1	1	1	1	1
TOTAL	16	15	14.5	14.5	14.5
<u>HUMAN RESOURCES AND RISK MANAGEMENT</u>					
DIRECTOR OF HUMAN RESOURCES & RISK MGT	1	1	1	1	1
SENIOR HUMAN RESOURCES ANALYST	1	1	1	1	1
HUMAN RESOURCES ANALYST	-	1	1	1	1
HUMAN RESOURCES SPECIALIST	2	1	1	1	1
SENIOR OFFICE ASSISTANT	1	1	1	1	1
MAILROOM AIDE	1	1	-	-	-
TOTAL	6	6	5	5	5
<u>CITY CLERK</u>					
CITY CLERK	1	1	1	1	1
ASSISTANT CITY CLERK	1	1	1	1	1
ADMINISTRATIVE ASSISTANT	2	2	2	2	2
TOTAL	4	4	4	4	4
<u>FINANCE</u>					
DIRECTOR OF FINANCE	1	1	1	1	1
FINANCE MANAGER	1	1	1	1	1
ACCOUNTANT	1	1	1	1	1
SENIOR ACCOUNTING TECHNICIAN	1	1	1	1	1
ACCOUNTING TECHNICIAN	1	1	1	1	1
PAYROLL TECHNICIAN	-	1	1	1	1
SENIOR ACCOUNT CLERK	2	1	1	1	1
ACCOUNT CLERK	5	5	5	5	5
TOTAL	12	12	12	12	12
<u>COMMUNITY DEVELOPMENT SERVICES</u>					
DIRECTOR OF COMMUNITY DEVELOPMENT	1	1	1	1	1
BUILDING MANAGER & SAFETY MANAGER	1	1	1	1	1
PLANNING MANAGER	1	1	1	1	1
CODE ENFORCEMENT SUPERVISOR	1	1	1	1	1
SENIOR BUILDING INSPECTOR/PLAN CHECKER	1	1	1	1	1
SENIOR PLANNER	1	1	1	1	1
BUILDING INSPECTOR	1	1	1	1	1
ASSOCIATE PLANNER	1	1	1	1	1
CODE ENFORCEMENT OFFICER	2	2	2	2	2

**CITY OF BUENA PARK  
SUMMARY OF POSITIONS  
FISCAL YEARS 2014-15 TO 2017-18**

	APPROVED FY14-15	APPROVED FY15-16	APPROVED FY16-17	APPROVED FY17-18	REVISED FY17-18
<u>COMMUNITY DEVELOPMENT SERVICES (CONT'D)</u>					
SENIOR ADMINISTRATIVE ASSISTANT	1	1	1	1	1
ADMINISTRATIVE ASSISTANT	1	1	1	1	1
PERMIT TECHNICIAN	2	2	2	2	2
SENIOR OFFICE ASSISTANT	1	1	1	1	1
BUILDING INSPECTOR TECHNICIAN	1	1	1	1	1
<b>TOTAL</b>	<b>16</b>	<b>16</b>	<b>16</b>	<b>16</b>	<b>16</b>
<u>POLICE</u>					
POLICE CHIEF	1	1	1	1	1
POLICE CAPTAIN	2	2	2	2	2
POLICE LIEUTENANT	6	6	5	5	5
POLICE SERGEANT	13	13	13	13	13
POLICE CORPORAL	20	20	20	20	20
POLICE OFFICER	47	47	48	48	50
INFORMATION SYSTEMS ADMINISTRATOR	1	1	1	1	1
DISPATCHER SUPERVISOR	-	-	-	-	1
POLICE LEAD DISPATCHER	2	2	2	2	1
INFORMATION SYSTEMS TECHNICIAN	2	2	2	2	2
FORENSIC SPECIALIST	3	3	3	3	3
POLICE DISPATCHER	8	8	8	8	9
PROPERTY TECHNICIAN	1	1	1	1	1
SENIOR ADMINISTRATIVE ASSISTANT	1	1	1	1	1
ADMINISTRATIVE ASSISTANT	1	1	1	1	1
POLICE RECORDS SUPERVISOR	-	-	1	1	1
LEAD RECORDS CLERK	1	1	-	-	-
CRIME ANALYST	-	-	-	-	1
CRIME ANALYST ASSISTANT	1	1	1	1	-
INVESTIGATIVE AIDE	2	-	-	-	-
POLICE SERVICES OFFICER	3	5	4	4	4
SENIOR ACCOUNT CLERK	1	1	1	1	1
POLICE RECORDS CLERK	8	9	9	9	10
PARKING ENFORCEMENT SPECIALIST	3	3	3	3	3
<b>TOTAL</b>	<b>127</b>	<b>128</b>	<b>127</b>	<b>127</b>	<b>131</b>
<u>PUBLIC WORKS</u>					
DIRECTOR OF PUBLIC WORKS/CITY ENGINEER	1	1	1	1	1
ASSISTANT CITY ENGINEER	1	1	1	1	1
FIELD OPERATIONS MANAGER	1	1	1	1	1
ASSOCIATE ENGINEER	2	2	2	2	2
SENIOR MANAGEMENT ANALYST	1	1	1	1	1
UTILITIES MANAGER	1	1	1	1	1
STREET MAINTENANCE SUPERINTENDENT	1	1	1	1	1
FACILITIES MAINTENANCE SUPERVISOR	1	1	1	1	1
FLEET MAINTENANCE SUPERVISOR	1	1	1	1	1
WATER SERVICES SUPERINTENDENT	-	-	1	1	1
SEWER SERVICES SUPERVISOR	-	-	1	1	1
ASSISTANT ENGINEER	4	4	4	4	4
SENIOR PUBLIC WORKS INSPECTOR	1	1	1	1	1
PUBLIC WORKS INSPECTOR	2	2	2	2	2
WATER QUALITY SPECIALIST	-	-	-	1	1
WATER QUALITY INSPECTOR	1	1	1	-	-
LEAD FLEET MECHANIC	1	1	1	1	1
SR. ENVIRONMENTAL INSPECTOR	1	1	1	1	1
ENVIRONMENTAL INSPECTOR	1	1	1	1	1
LEAD MAINTENANCE WORKER	3	3	4	4	4
LEAD SIGNS & MARKINGS TECHNICIAN	1	1	1	1	1
LEAD WATER SERVICES TECHNICIAN	5	5	4	3	3
LEAD SEWER SERVICES TECHNICIAN	1	1	-	-	-
FLEET MECHANIC	3	3	2	2	2
GIS SPECIALIST	1	1	1	1	1
SENIOR TRAFFIC PAINTER	1	1	1	1	1

**CITY OF BUENA PARK  
SUMMARY OF POSITIONS  
FISCAL YEARS 2014-15 TO 2017-18**

	APPROVED FY14-15	APPROVED FY15-16	APPROVED FY16-17	APPROVED FY17-18	REVISED FY17-18
<u>PUBLIC WORKS (CONT'D)</u>					
FACILITIES MAINTENANCE TECHNICIAN	1	1	1	1	1
SENIOR MAINTENANCE WORKER	5	5	4	4	4
SENIOR WATER SERVICES TECHNICIAN	2	2	2	3	3
SENIOR SEWER SERVICES TECHNICIAN	1	1	1	1	1
SENIOR ADMINISTRATIVE ASSISTANT	2	2	2	2	2
MAINTENANCE WORKER	7	7	6	6	6
FACILITIES MAINTENANCE WORKER	1	1	1	1	1
WATER SERVICES TECHNICIAN	6	6	6	6	6
SEWER SERVICES TECHNICIAN	1	1	1	1	1
MAINTENANCE HELPER	2	2	2	2	2
PERMIT TECHNICIAN	2	2	2	2	2
SENIOR OFFICE ASSISTANT	1	1	1	1	1
TOTAL	<u>67</u>	<u>67</u>	<u>65</u>	<u>65</u>	<u>65</u>
<u>COMMUNITY SERVICES</u>					
DIRECTOR OF REC & COMM SVCS	1	1	1	1	1
PARKS & RECREATION MANAGER	1	1	1	1	1
COMMUNITY SERVICES SUPERVISOR	2	2	2	2	2
SENIOR ADMINISTRATIVE ASSISTANT	1	1	1	1	1
LEAD MAINTENANCE WORKER	1	1	1	1	1
SR. MAINTENANCE WORKER	1	1	1	1	1
MAINTENANCE WORKER	3	3	3	3	3
CUSTODIAN	1	1	1	1	1
DRIVER/SCHEDULER	1	1	1	1	1
MAINTENANCE HELPER	3	3	3	3	3
COMMUNITY OUTREACH COORDINATOR	1	1	1	1	1
SENIOR COMMUNITY SERVICES COORDINATOR	-	2	2	2	2
COMMUNITY SERVICES COORDINATOR	4	2	2	2	3
MARKETING ASSISTANT	-	-	0.5	0.5	0.5
SENIOR OFFICE ASSISTANT	1	1	1	1	1
TOTAL	<u>21</u>	<u>21</u>	<u>21.5</u>	<u>21.5</u>	<u>22.5</u>
TOTAL CITY	<u>274</u>	<u>274</u>	<u>270</u>	<u>270</u>	<u>275</u>
<u>VACANT POSITIONS</u>					
HUMAN RESOURCES SPECIALIST	(1)	-	-	-	-
MAILROOM AIDE	(1)	(1)	-	-	-
ADMINISTRATIVE ASSISTANT	(1)	-	-	-	-
ACCOUNT CLERK	(1)	(1)	-	-	-
POLICE LIEUTENANT	(2)	(1)	-	-	-
POLICE SERGEANT	(1)	(1)	(1)	(1)	(1)
POLICE OFFICER	(2)	(1)	-	-	-
POLICE SERVICE OFFICER	(1)	(1)	-	-	-
FLEET MECHANIC	(1)	(1)	-	-	-
PUBLIC WORKS INSPECTOR	(1)	(1)	-	-	-
SENIOR MAINTENANCE WORKER	(1)	-	-	-	-
MAINTENANCE WORKER	(2)	(1)	-	-	-
	<u>(15)</u>	<u>(9)</u>	<u>(1)</u>	<u>(1)</u>	<u>(1)</u>
REVISED TOTAL CITY	<u>259</u>	<u>265</u>	<u>269</u>	<u>269</u>	<u>274</u>



